

"COMO" COPPER INFILTRATED VALVE SEAT INSERTS



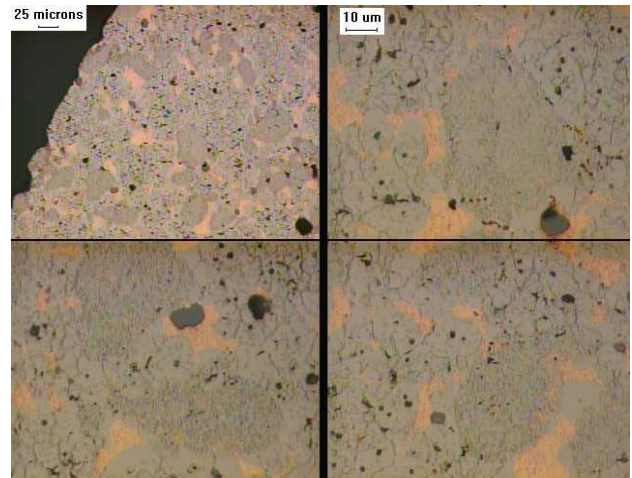
DESCRIPTION and APPLICATION

The new COMO valve seat combines the best wear resistance, corrosion resistance and heat transfer than any seat offered to the aftermarket. The Como seat has Stellite like metallurgy combined with additives that offer excellent machinability.

In an independent engine dyno test, COMO valve seats had 60% less wear than a competitor's "Stellite" valve seats.

The micrographs show the excellent microstructure achieved with powder metal materials.

- Offers superior thermal conductivity
- Excellent machining characteristics
- Lowest wear - Improved reliability/durability
- High thermal expansion
- Superior surface finishes
- Suitable for HD intake and exhaust seats, gas, LPG and diesel
- Compatible with most valve materials



CHEMICAL COMPOSITION

<u>CHEMICAL COMPOSITION</u>	<u>COMO</u>
Carbon	1.1
Chromium	6.5
Cobalt	30.0
Copper	14.8
Iron / (Proprietary)	25.2
Manganese	0.5
Molybdenum	16.0
Nickel	0.3
Silicon	0.8
Tungsten	3.7
Vanadium	1.1

PHYSICAL PROPERTIES

Apparent Hardness	45 HRC (approx.)
Density	7.74g/cc
Micro Hardness	57 HRC



**"Killer Bee"
Valve Seat
Line**